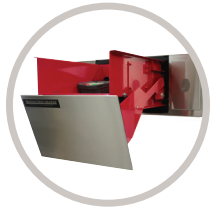


DRIVE-THRU AND PHYSICAL SECURITY EQUIPMENT: ARCHITECT REFERENCE SHEET



ELECTRIC TRANSACTION DRAWERS

Galvanized steel and aluminum bodywork engineered for maximum reliability and durability. Electric drawers are UL-listed and come standard with manual operations kit and are compatible with a variety of audio options and transaction accessories. Three sizes to accommodate new build and retrofit projects. Max. 8" wall thickness above Large drawer.

MODELS AND PRODUCT NUMBER:

Small - 30000991

Medium - 20000991

Large - 00500993

**BAVIS
MAKES IT
EASY!**

Planning
Procurement
Installation



MANUAL TRANSACTION DRAWERS

Same high-quality components and engineering as their electric counterparts. Manual controls geared for effortless operation. Manual drawers are compatible with a variety of audio options and transaction accessories.

MODELS AND PRODUCT NUMBER:

Premium - 13000991

Basic with Countertop - 28000993



WINDOW-DRAWER COMBINATION UNITS

Combo units pair our large electric transaction drawer with UL-listed, level-1 bullet-resistant glass windows. Steel frame is finished with standard black powder coat to protect the unit from weather and elements. Includes exterior audio components only, as well as countertop workspace. All units ship fully assembled for easy installation. Min. 8" wall thickness.

MODELS AND PRODUCT NUMBER:

60x63 Hurricane Combo - 12103991

60X63 Combo - 12000989

56X48 Combo - 12000993

50X60 Combo - 12001017

32X48 Combo - 12000992



PREMIUM, BASIC AND HURRICANE-RATED PREMIUM WINDOWS

All Bavis windows come standard with UL-listed, level-1 bullet-resistant glass. Premium windows include finished trim with additional upgrades available. Hurricane windows are HVHZ-rated and are ideal for any region where extreme weather is a concern. Premium window min. 8" wall thickness.

MODELS AND PRODUCT NUMBER:

112X32 Premium Window - 12000996	43X36 Basic Window - 12147996
56X32 Premium Window - 12000994	32X33 Basic Window - 12147991
32X32 Premium Window - 12000987	112X32 Hurricane - 12103994
65X36 Basic Window - 12147995	56X33 Hurricane - 12103995
56X33 Basic Window - 12147992	



PNEUMATIC TUBE SYSTEMS

Most commonly deployed as a banking solution, pneumatic tube systems are also an ideal carrier solution for industrial and medical facilities, and even weigh stations. Advanced systems may be outfitted with additional blowers to accommodate longer runs.

MODELS AND PRODUCT NUMBER:

Basic Pneumatic Tube System - 23000994
Advanced Pneumatic Tube System - 23000992



TRANSTRAX REMOTE LANE DELIVERY SYSTEM

Originally developed for banks, the pencil-box-sized TransTrax carrier is transported overhead along a tape track to service remote-lane drive-thru. System is engineered for reliability and easy maintenance, and includes duplex audio. Track configurations include standard, splayed and reverse lane. Maximum run of 60 ft. Carrier can be stopped at truck or car height.

PRODUCT NUMBER: Call/Email for configurations



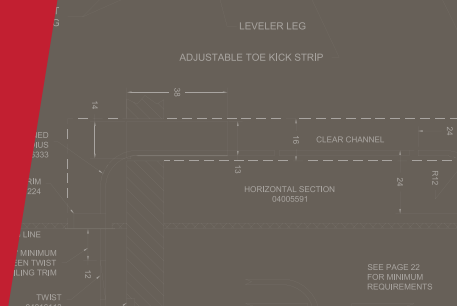
CAPTIVE CARRIER TRANSTRAX

Purpose-built for pharmacy, but practical for a variety of retail applications, Captive Carrier delivers a larger payload on the TransTrax system. Track configurations include standard, splayed and reverse lane. Maximum run of 30 ft. Carrier can be stopped at truck or car height. Includes exterior audio components.

PRODUCT NUMBER: Call/Email for configurations

VISIT BAVIS.COM/ARCHITECTS FOR:

- REVIT FAMILIES
- 3-PART SPECS
- DRAWINGS (DWG PDF)
- MANUALS
- MORE!



ABOUT BAVIS

Since 1957, Bavis Fabacraft has manufactured drive thru solutions that expand customer access, ensure employee and customer security and empower businesses to transact more, faster.



Better Drive-thru

PHARMACIES | BANKS | RESTAURANTS | DISPENSARIES | GOVERNMENT SERVICES

BAVIS.COM | 513.677.0500 | info@bavis.com
LinkedIn: company/bavisfabacraft | Twitter: @BavisFabacraft

201 Grandin Rd. | Maineville, OH 45039